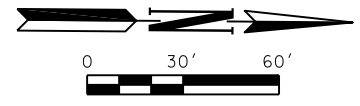
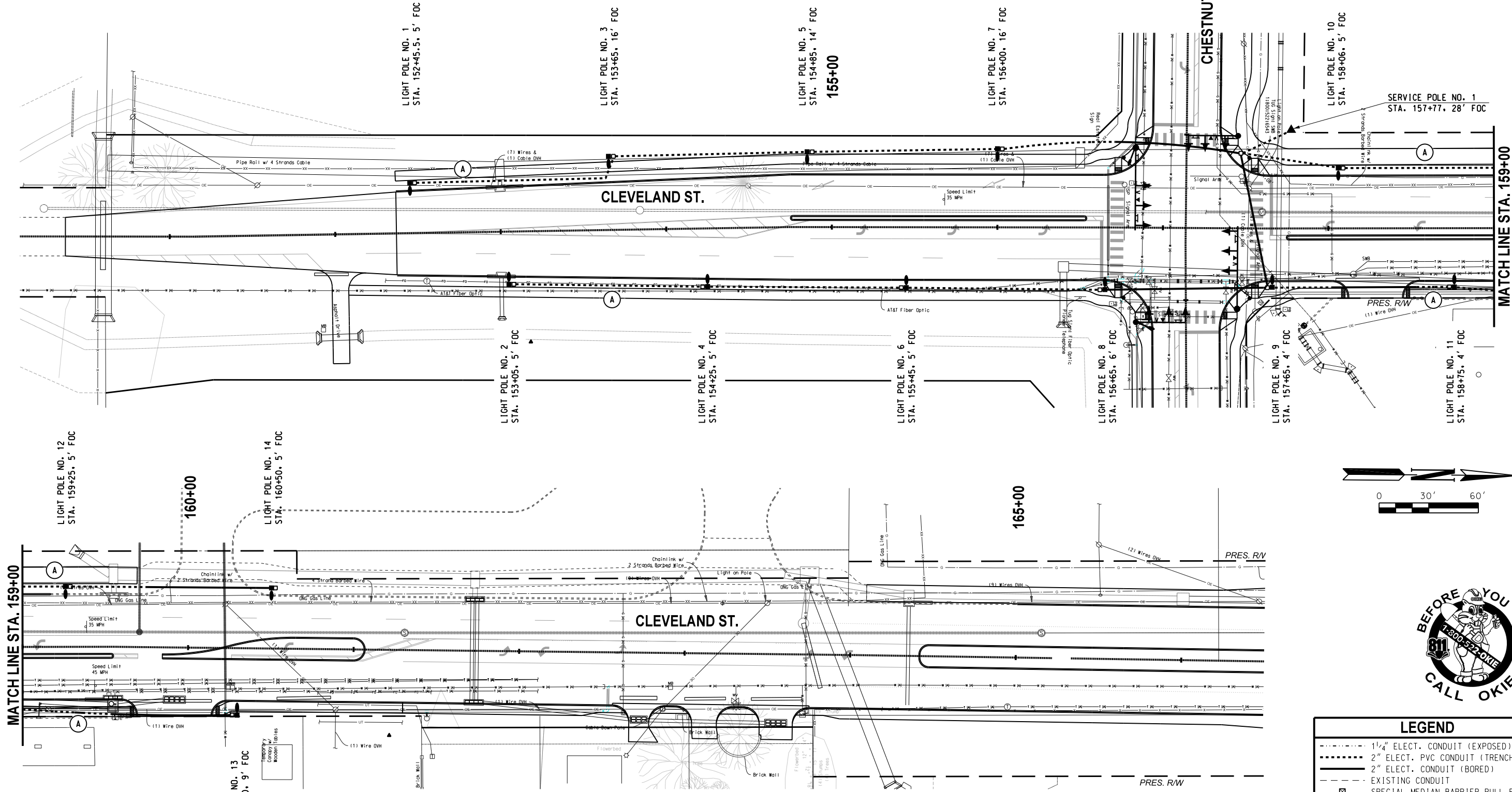


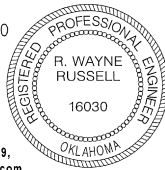
G:\0\Projects\T-2280 Cleveland S1 & Chestnut Ave - Engr, OK\CAD\R-301A INTERSECTION\LIGHT.Ldgn

REVISIONS		
NO.	DESCRIPTION	DATE



LEGEND	
	1 1/2" ELECT. CONDUIT (EXPOSED)
	2" ELECT. PVC CONDUIT (TRENCHED)
	2" ELECT. CONDUIT (BORED)
	EXISTING CONDUIT
	SPECIAL MEDIAN BARRIER PULL BOX
	SIZE 1 PULL BOX
	ELECTRIC SERVICE LOCATION
	CIRCUIT DESIGNATION
	LIGHT POLE W/O BREAKAWAY BASE
	LIGHT POLE W/ BREAKAWAY BASE
	TWIN LIGHT POLE W/O BREAKAWAY BASE
	TWIN LIGHT POLE W/ BREAKAWAY BASE

R. Wayne Russell
 R. WAYNE RUSSELL, P.E. # 16030
 C.A. # 1160, RENEWAL 06-30-17



12-12-16
 DATE

Traffic Engineering Consultants, Inc.
 6000 S. Western, Suite 300 - Oklahoma City, OK 73139,
 Ph: 405-720-7721, Fax: 405-720-9848, Web: www.tecok.com

Design	RWR	2/14/2016
Drawn	SB	2/14/2016



**LIGHTING PLAN
 CLEVELAND ST.**

Project No. R-1311A Sheet No. T6